

Using the AMIRE CVS server

This document describes how the AMIRE CVS server can be accessed with WinCVS. WinCVS is a GUI client for a remote cvs server. The binaries of this software can be obtained at "<http://www.cvs GUI.org/>". The address of the AMIRE CVS server id "jurassic.fhs-hagenberg.ac.at:2401". Figure 1 shows the configuration dialog of WinCVS. Enter the configuration parameters as depicted in Figure 1, except the username, which should be YOUR username. (WinCVS automatically assembles the CVSROOT entry out of your input.) To get to this dialog, click on "Admin->Preferences". (See also Figure 2).

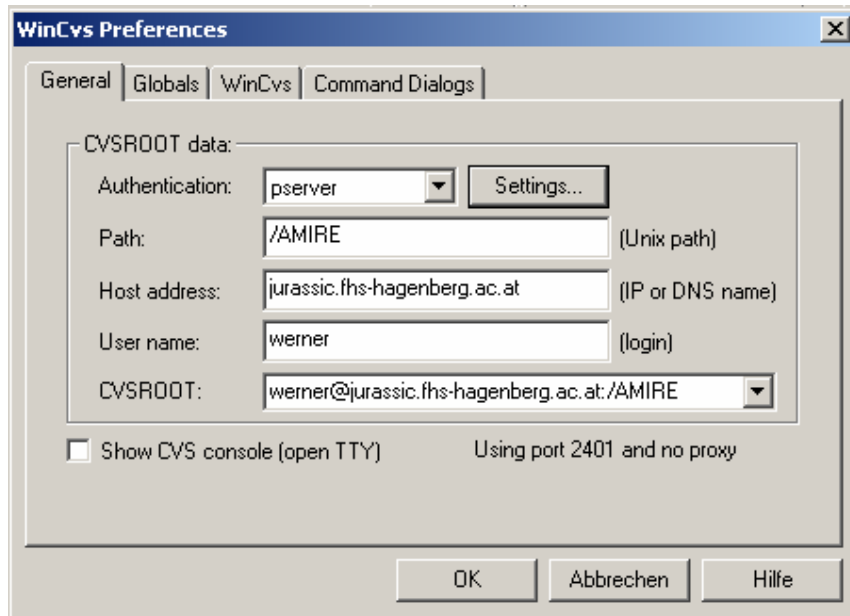


Figure 1: WinCVS Configuration

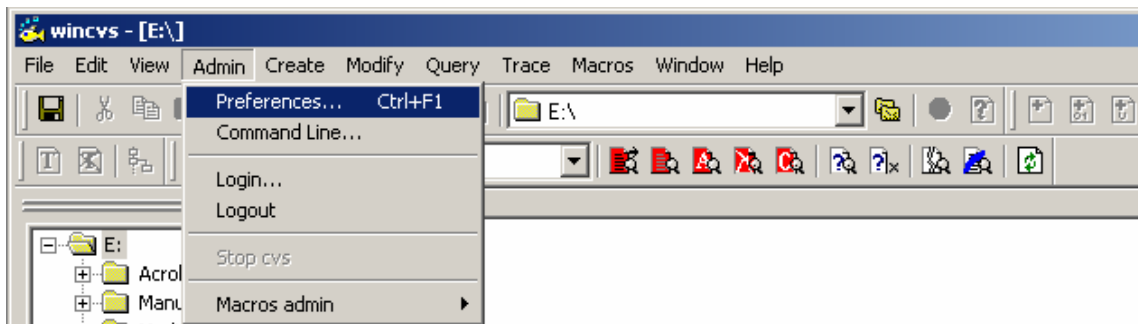


Figure 2: How to get to the WinCVS configuration dialog.

After you have entered the configuration data, click "Admin->Login...", enter your password and click ok. The output window of WinCVS should look like Figure 3 if login was successful. (The "Python is not available" warning can be ignored)

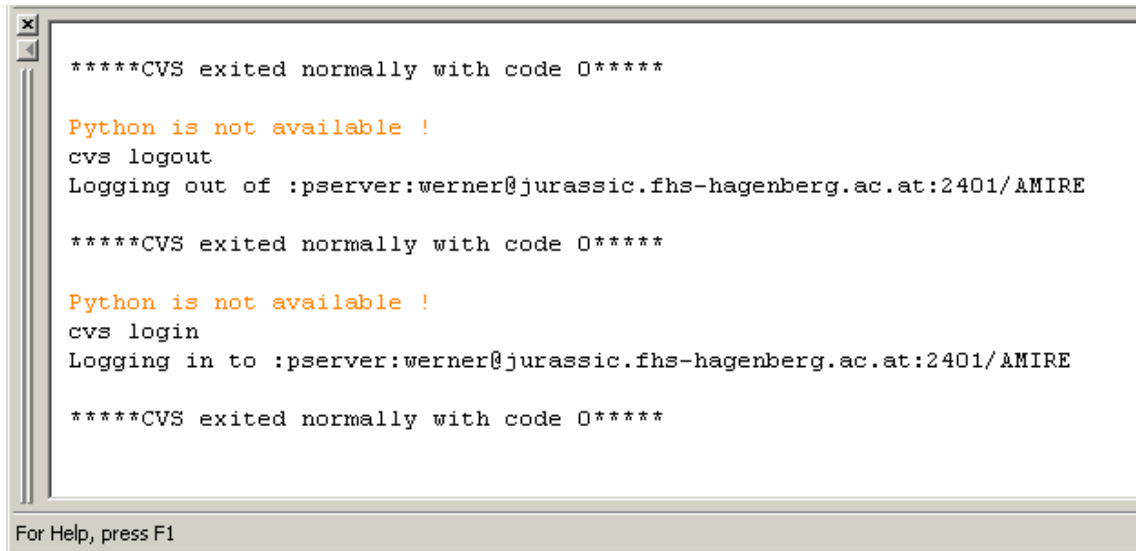


Figure 3: Successful Login

You can check whether your configuration works by sending a cvs command manually to the server. This is done by clicking “Admin->Command Line...”

Checking out

To check out a module, click “Create->Checkout module...”. This opens a dialog that lets allows to specify the directory or file which is checked out and the target directory. See also Figure 4.

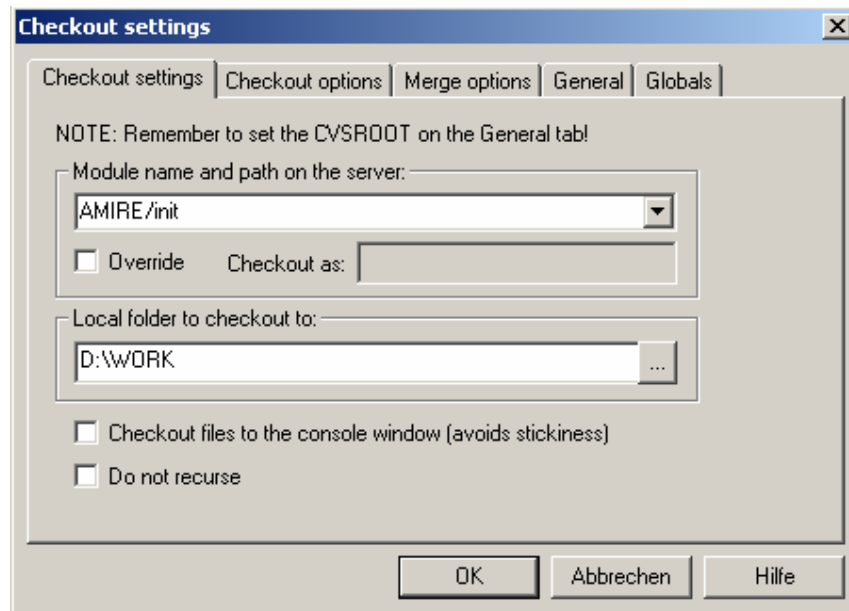


Figure 4 : Check out

The “Globals” tab of this dialog allows to select whether the files should be checked out write protected or not.

Checking in

The modified files can be checked in by right clicking the modules view and selecting the menu entry "Commit selection" as depicted in Figure 5. This displays the commit dialog, which allows entering a commit message. (See Figure 6)

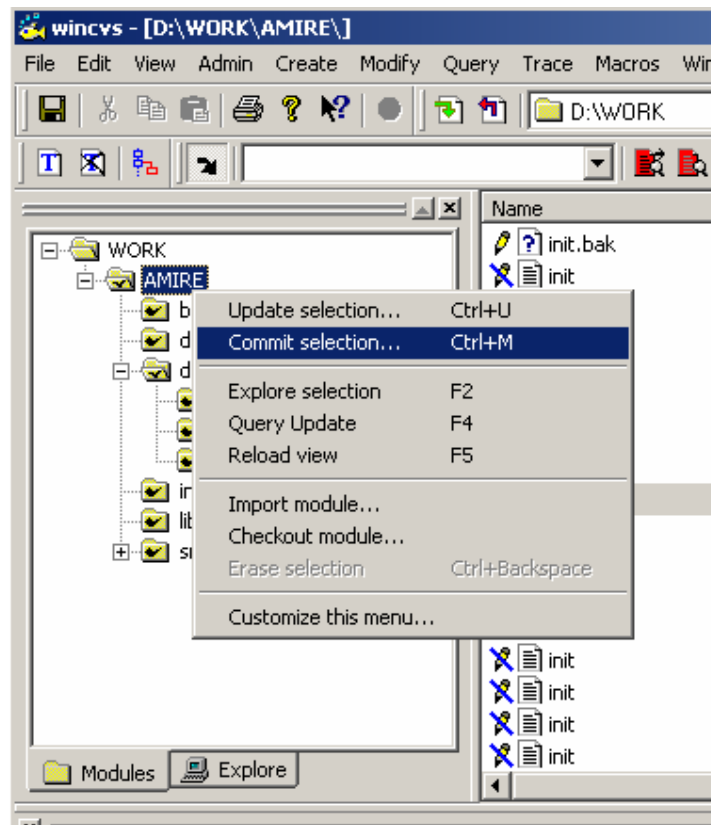


Figure 5 : Commit selection

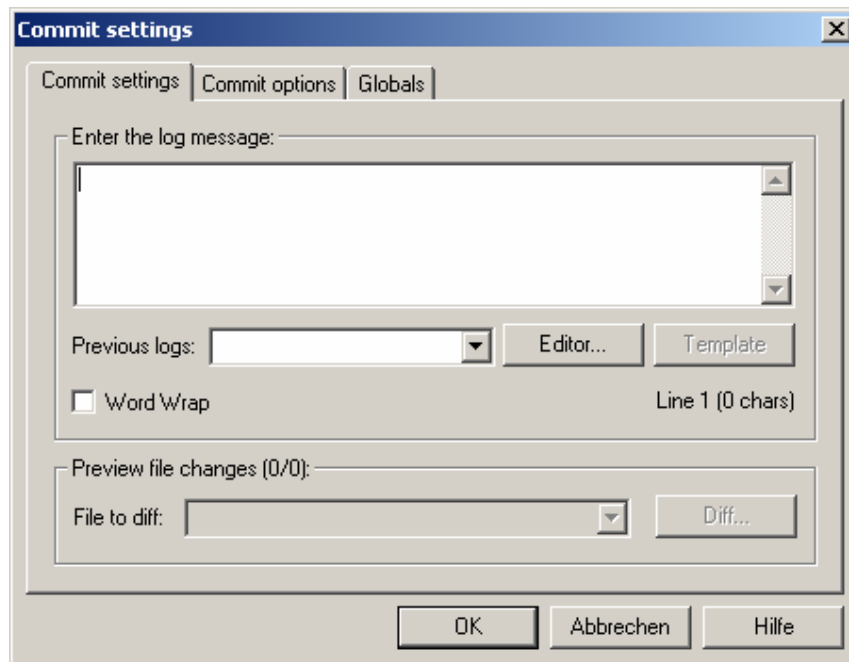


Figure 6 : Commit dialog

Adding and Deleting Files and Directories

A file or a directory that should be added to cvs must exist in the local working directory.